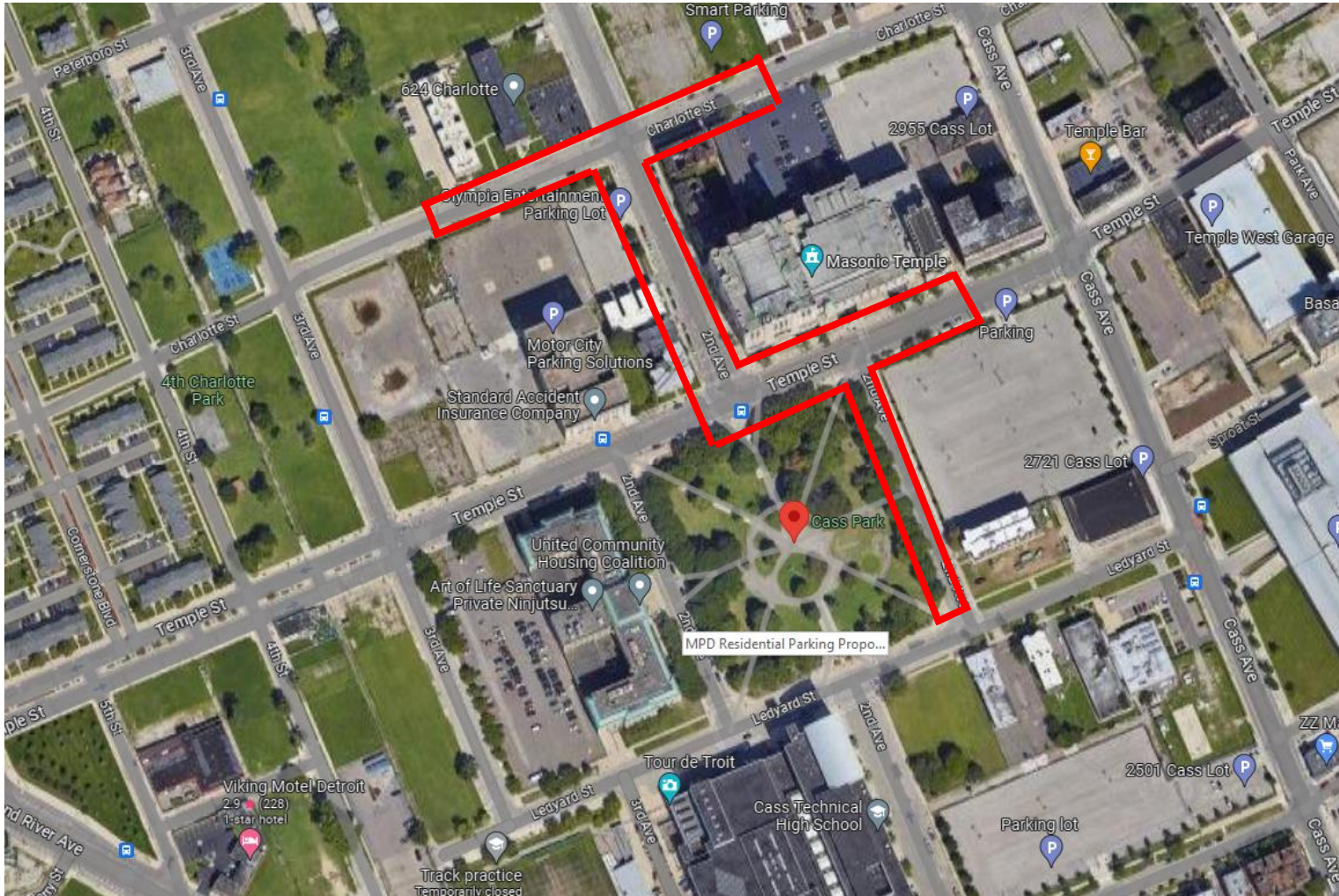


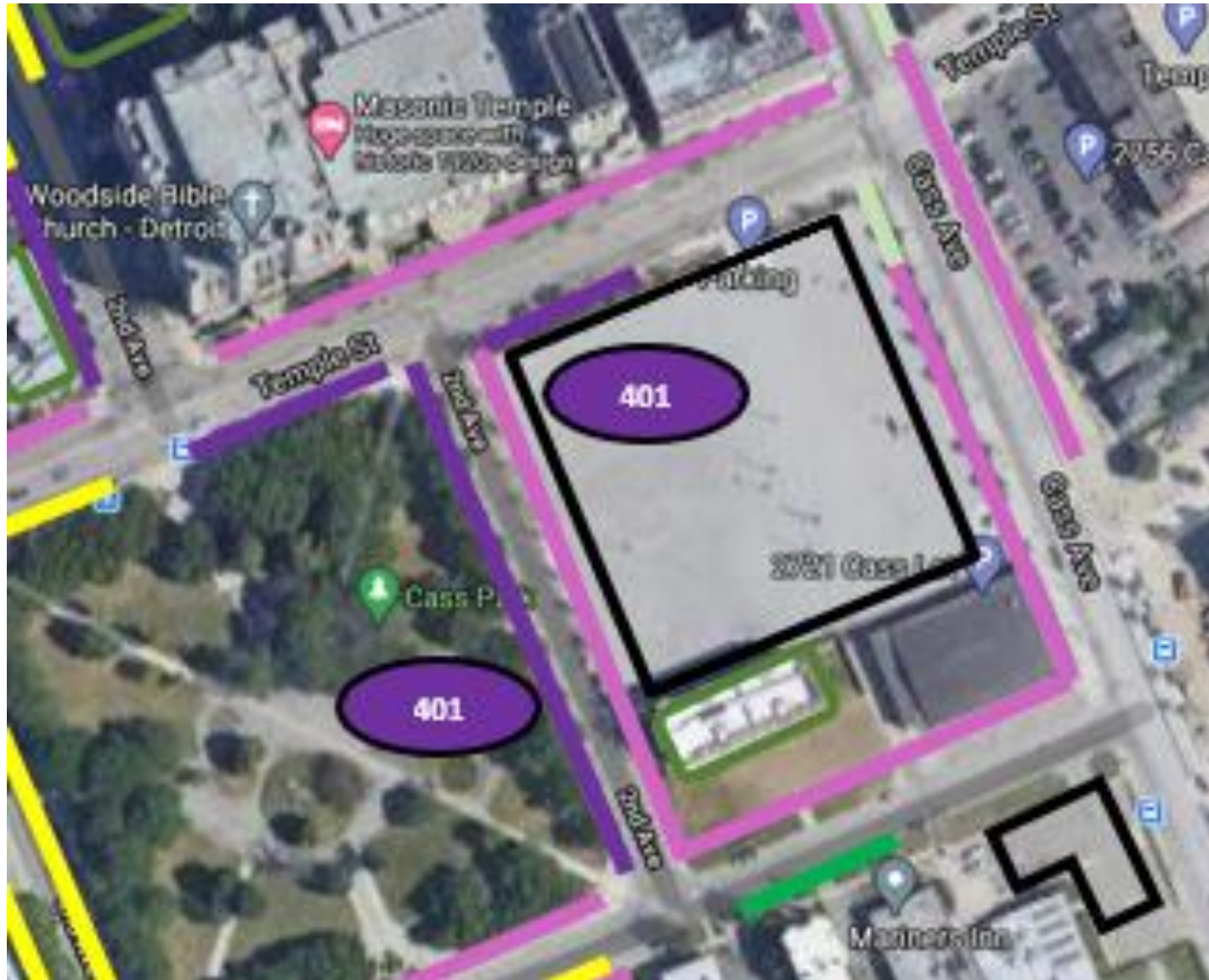


Cass Park – Entertainment/Business/Residential w/heavy LCA activity



- Boundaries
 - Starting point-intersection of Ledyard & Second Avenue
 - Second Avenue to Temple
 - Temple to Charlotte
 - Charlotte Mid-Block (600's) to Charlotte Mid-Block (400's)
 - Charlotte Mid-Block (400's) to Second
 - Second to Temple
 - Temple to Temple Mid-Block 400's
 - Temple Mid-Block 400's to Second
 - Second to Ledyard

Cass Park Area – Proposed Zone 401



- Residential Parking
- Meter Parking
- No Parking
- Non- Meter Parking
- Private Lots
- Existing Meters
- Public Transit Stop
- Future RPP Parking
- Residential Meter Parking
- Residential Groups
- Municipal Parking
- Bike Lanes

Cass Park Area – Proposed Zone 402



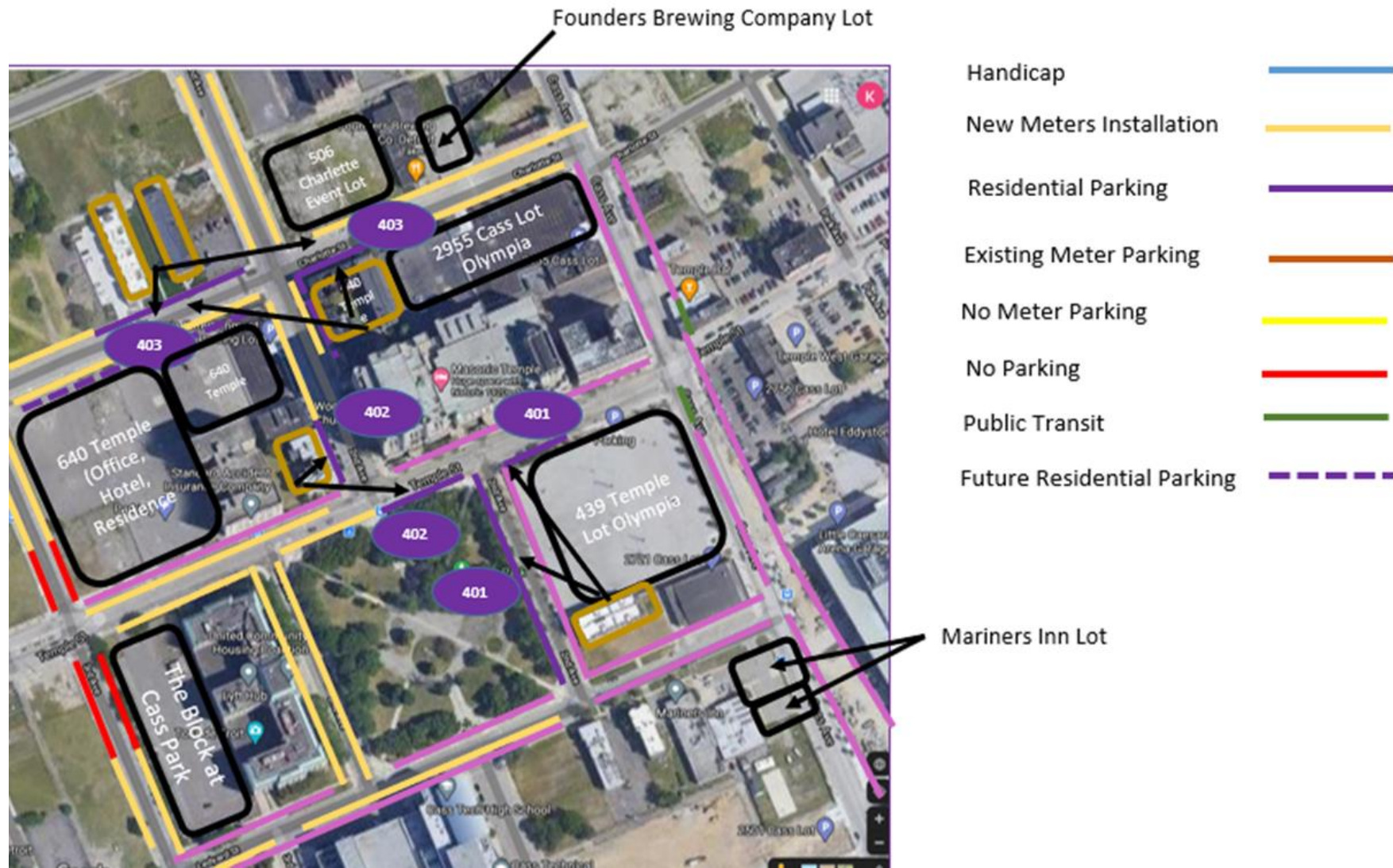
- | | |
|---------------------------|---|
| Residential Parking |  |
| Meter Parking |  |
| No Parking |  |
| Non- Meter Parking |  |
| Private Lots |  |
| Existing Meters |  |
| Public Transit Stop | |
| Future RPP Parking |  |
| Residential Meter Parking |  |
| Residential Groups |  |
| Municipal Parking |  |
| Bike Lanes |  |

Cass Park Area – Proposed Zone 403



Residential Parking	
Meter Parking	
No Parking	
Non- Meter Parking	
Private Lots	Private Lots
Existing Meters	
Public Transit Stop	
Future RPP Parking	
Residential Meter Parking	
Residential Groups	
Municipal Parking	
Bike Lanes	

Residential Parking – Cass Park Area Second/Temple/Charlotte

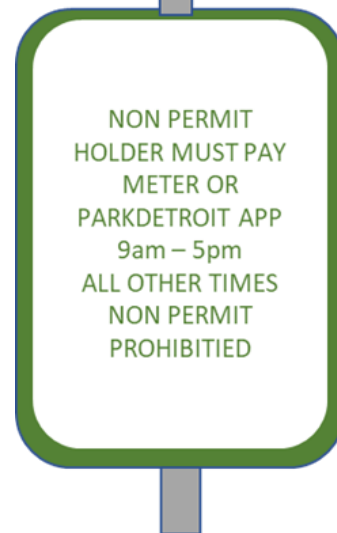


Time Period Metered Residential Parking Zone

Cass Park
Zones Signs

401, 402, 403

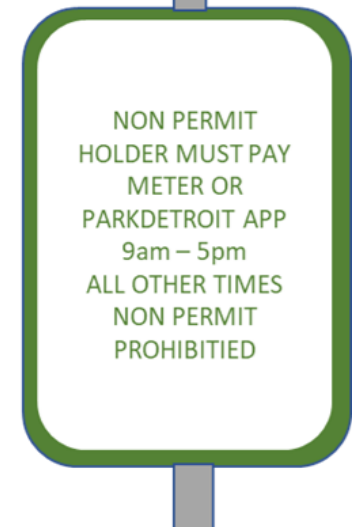
- Three vehicles per permit will be allowed to be registered
- 30 annual visitor passes
- 3 caregiver passes
- Car rental passes based on visitor pass availability



Residential permit holders
park 24hrs every day

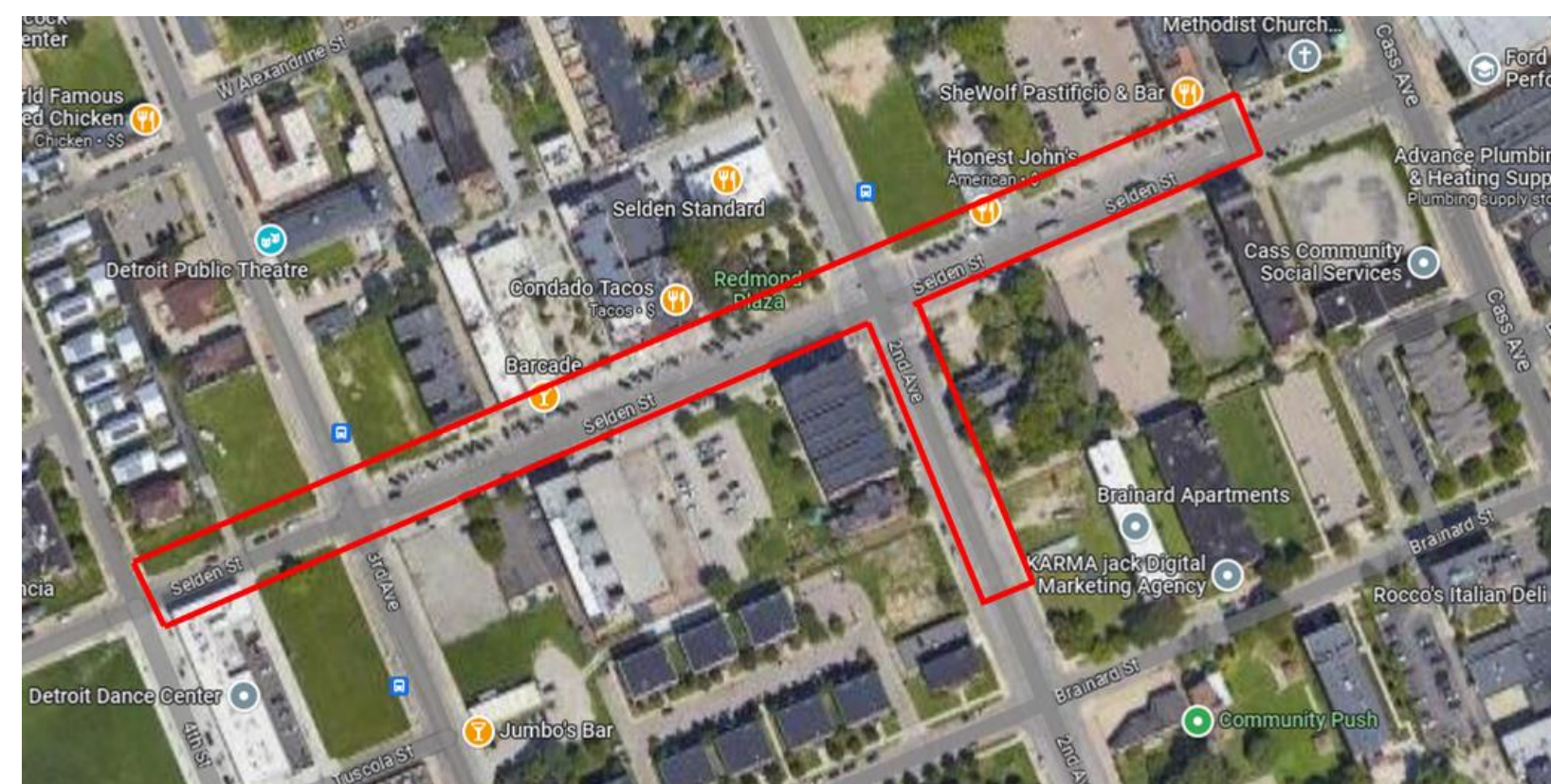


Non-Residential permit
holders can park
between 9am to 5pm





Selden Residential Parking Area



- Boundaries
 - Starting point-intersection of Selden & Cass
 - Second to Mid-Block(3733 Second)
 - Mid-Block Second (3733 Second) to Selden
 - Selden to Fourth
 - Fourth to Second/Selden
 - Selden to Cass

Selden Residential Zone 405 (9am – 5pm: metered)



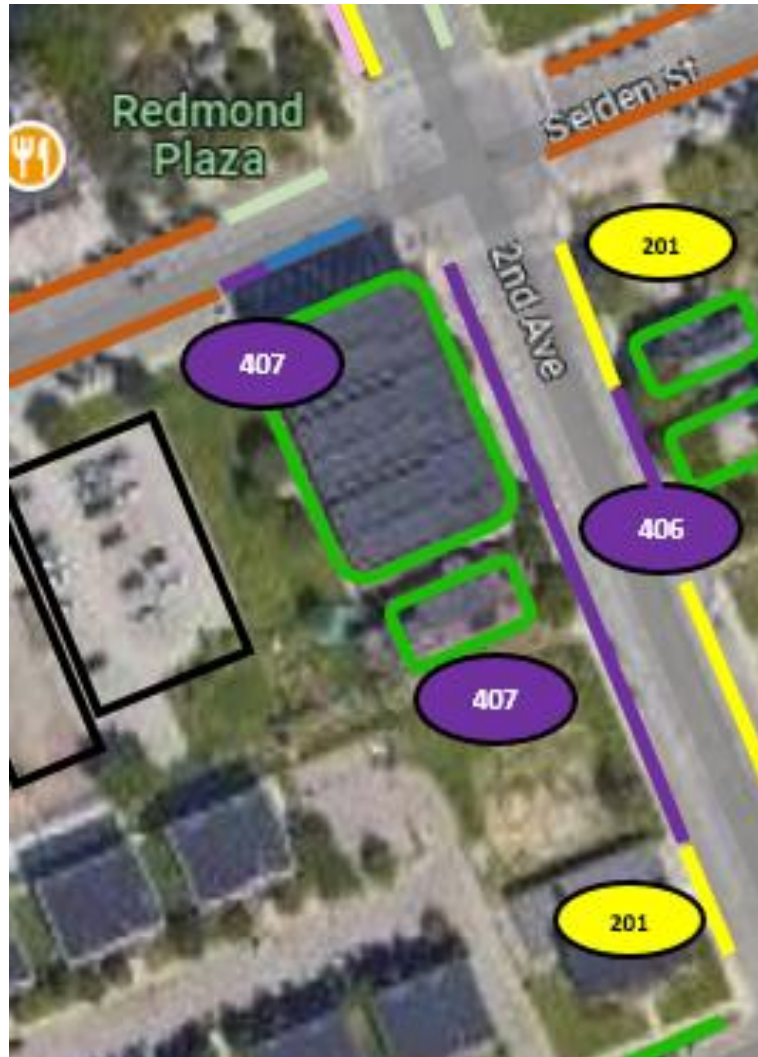
- Residential Parking 
- Meter Parking 
- No Parking 
- Non- Meter Parking 
- Private Lots 
- Existing Meters 
- Public Transit Stop 
- Future RPP Parking 
- Residential Meter Parking 
- Residential Groups 
- Municipal Parking 
- Bike Lanes 

Selden – Residential Zone 406 (Permanent: sign only)



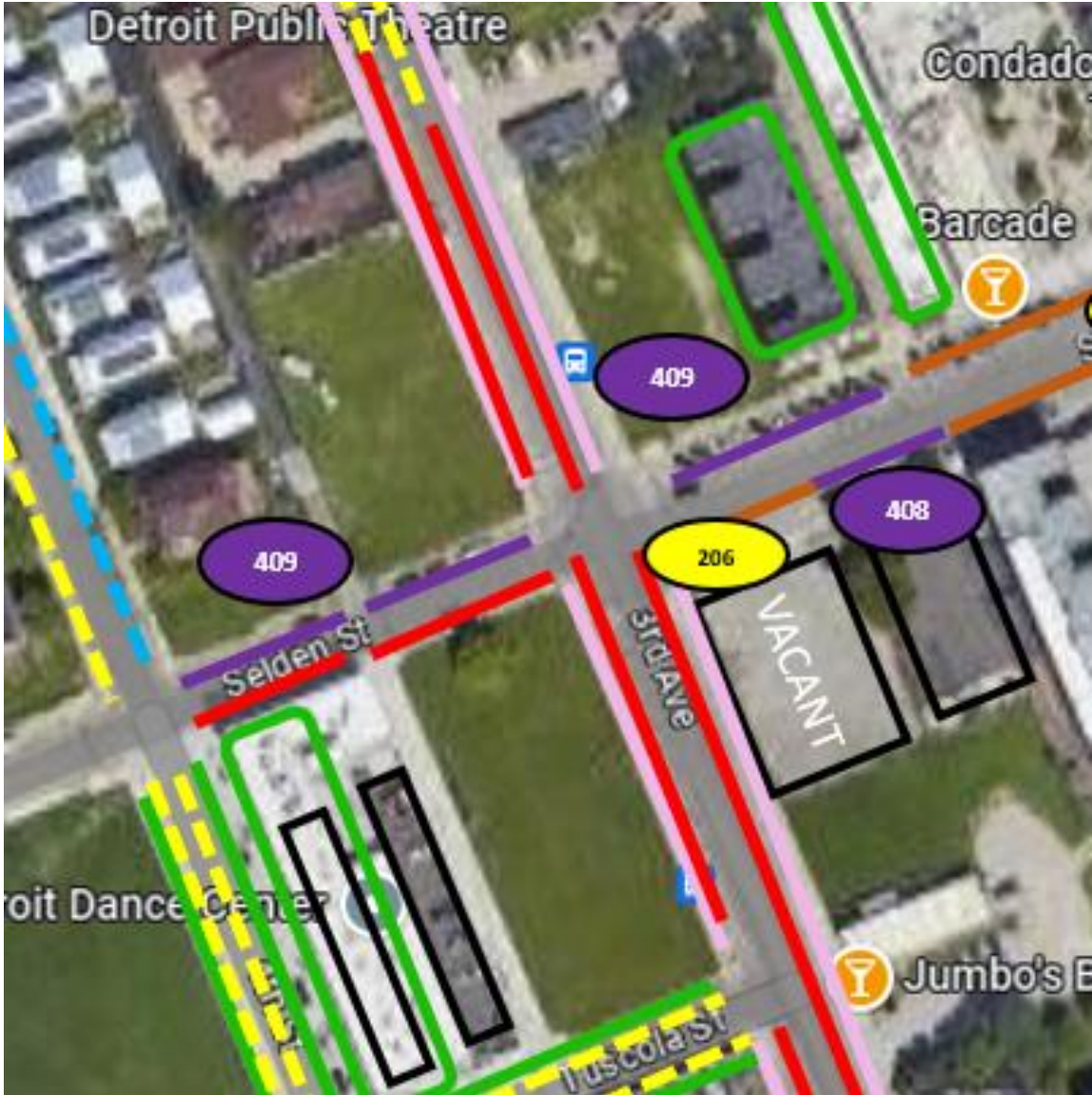
Residential Parking	
Meter Parking	
No Parking	
Non- Meter Parking	
Private Lots	
Existing Meters	
Public Transit Stop	
Future RPP Parking	
Residential Meter Parking	
Residential Groups	
Municipal Parking	
Bike Lanes	

Selden – Residential Zones 407 (9am – 5pm: metered)



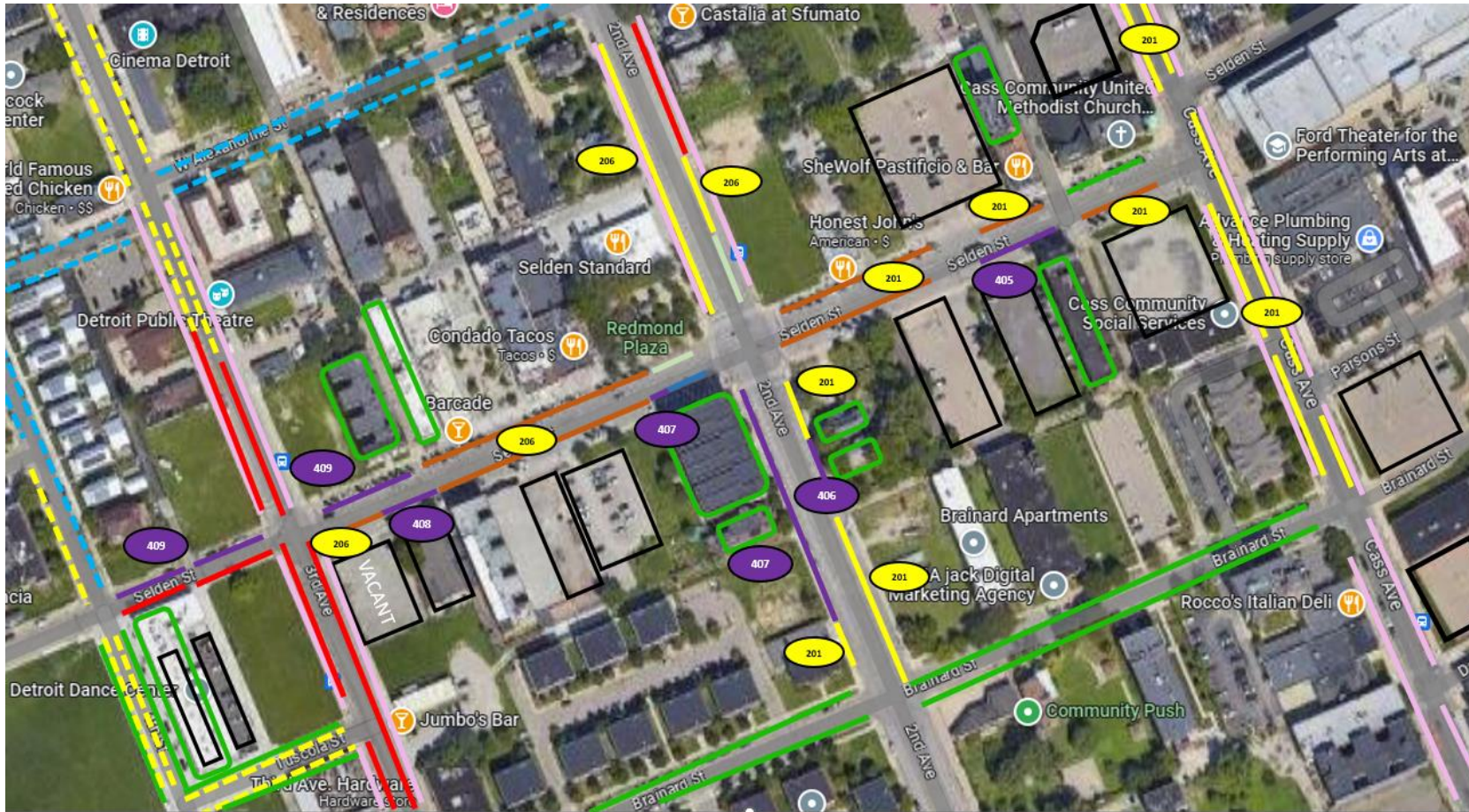
Residential Parking	
Meter Parking	
No Parking	
Non- Meter Parking	
Private Lots	
Existing Meters	
Public Transit Stop	
Future RPP Parking	
Residential Meter Parking	
Residential Groups	
Municipal Parking	
Bike Lanes	

Selden – Residential Zones 408 & 409 (9am – 5pm: metered)



- Residential Parking
- Meter Parking
- No Parking
- Non- Meter Parking
- Private Lots
- Existing Meters
- Public Transit Stop
- Future RPP Parking
- Residential Meter Parking
- Residential Groups
- Municipal Parking
- Bike Lanes

Residential Parking Proposal – Selden and Second



Residential Parking	
Meter Parking	
No Parking	
Non- Meter Parking	
Private Lots	
Existing Meters	
Public Transit Stop	
Future RPP Parking	
Residential Meter Parking	
Residential Groups	
Municipal Parking	
Bike Lanes	

Time Period Metered Residential Parking Zone

Zones Signs

405, 407, 408,
409

- Two vehicles per permit will be allowed to be registered in zones 405 and 408
- Three vehicles per permit will be allowed to be registered in zones 407 and 409
- 30 annual visitor passes
- 3 caregiver passes
- Car rental passes based on visitor pass availability



Residential permit holders
park 24hrs every day



Non-Residential permit
holders can park
between 9am to 5pm



Time Period Metered Residential Parking Zone

Zones Signs

406

- Three vehicles per permit will be allowed to be registered in zones 406
- 30 annual visitor passes
- 3 caregiver passes
- Car rental passes based on visitor pass availability

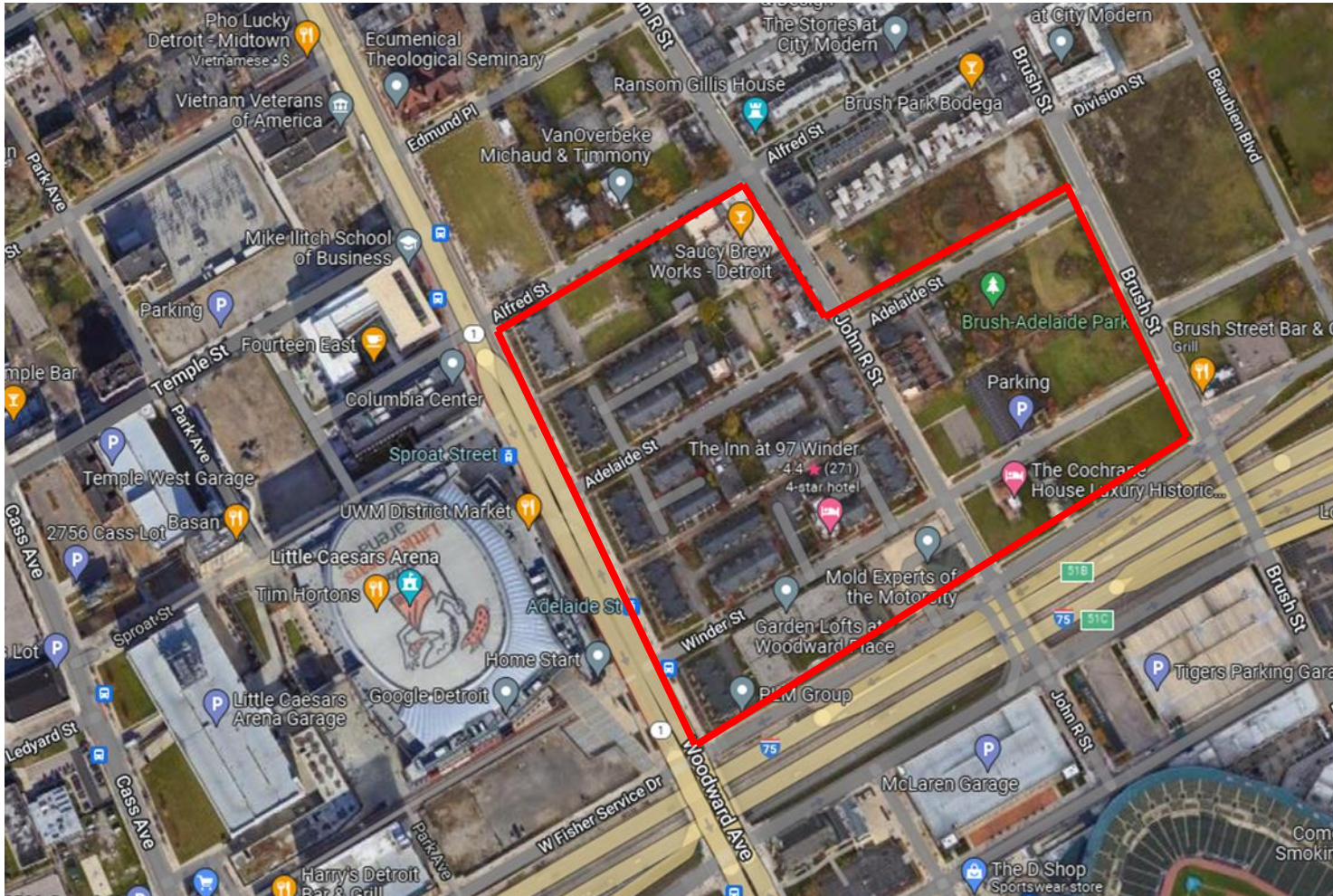


Residential permit holders
park 24hrs every day

Non-Residential permit
holders can not park in
this zone



Southern Brush Park - Residential w/heavy LCA activity



- Boundaries
 - Starting point-intersection of Woodward & Fisher Service Drive
 - Woodward to Alfred
 - Alfred to John R
 - John R to Adelaide
 - Adelaide to Brush
 - Brush to Fisher Service Drive
 - Fisher Service Drive to Woodward

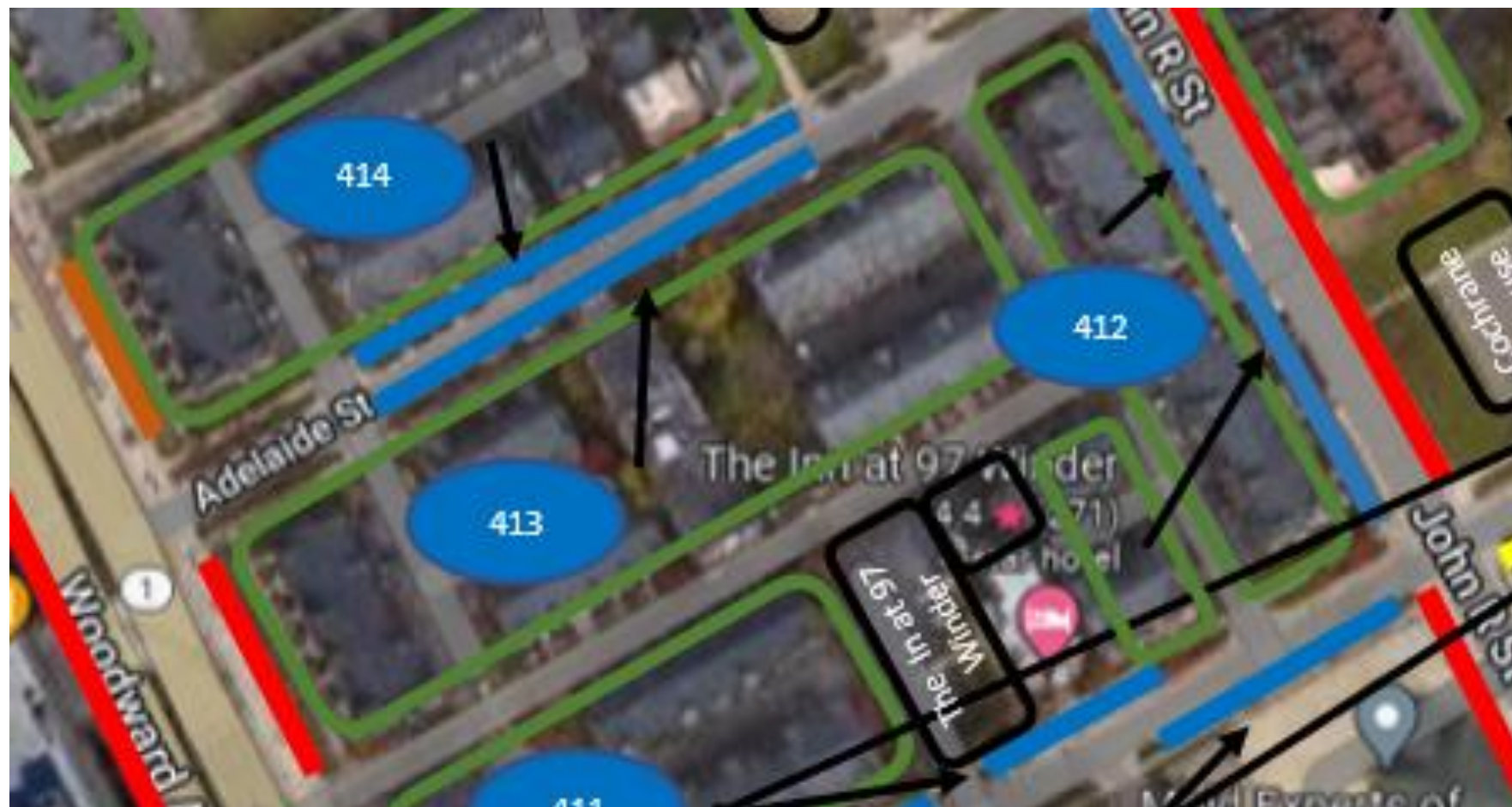


Residential Parking – Winder (Southern Brush Park) Zone 412



Residential Parking	
Meter Parking	
No Parking	
Non- Meter Parking	
Private Lots	
Existing Meters	
Public Transit Stop	
Future RPP Parking	
Residential Meter Parking	
Residential Groups	
Municipal Parking	

Residential Parking –Winder (Southern Brush Park) Zones 413 - 414



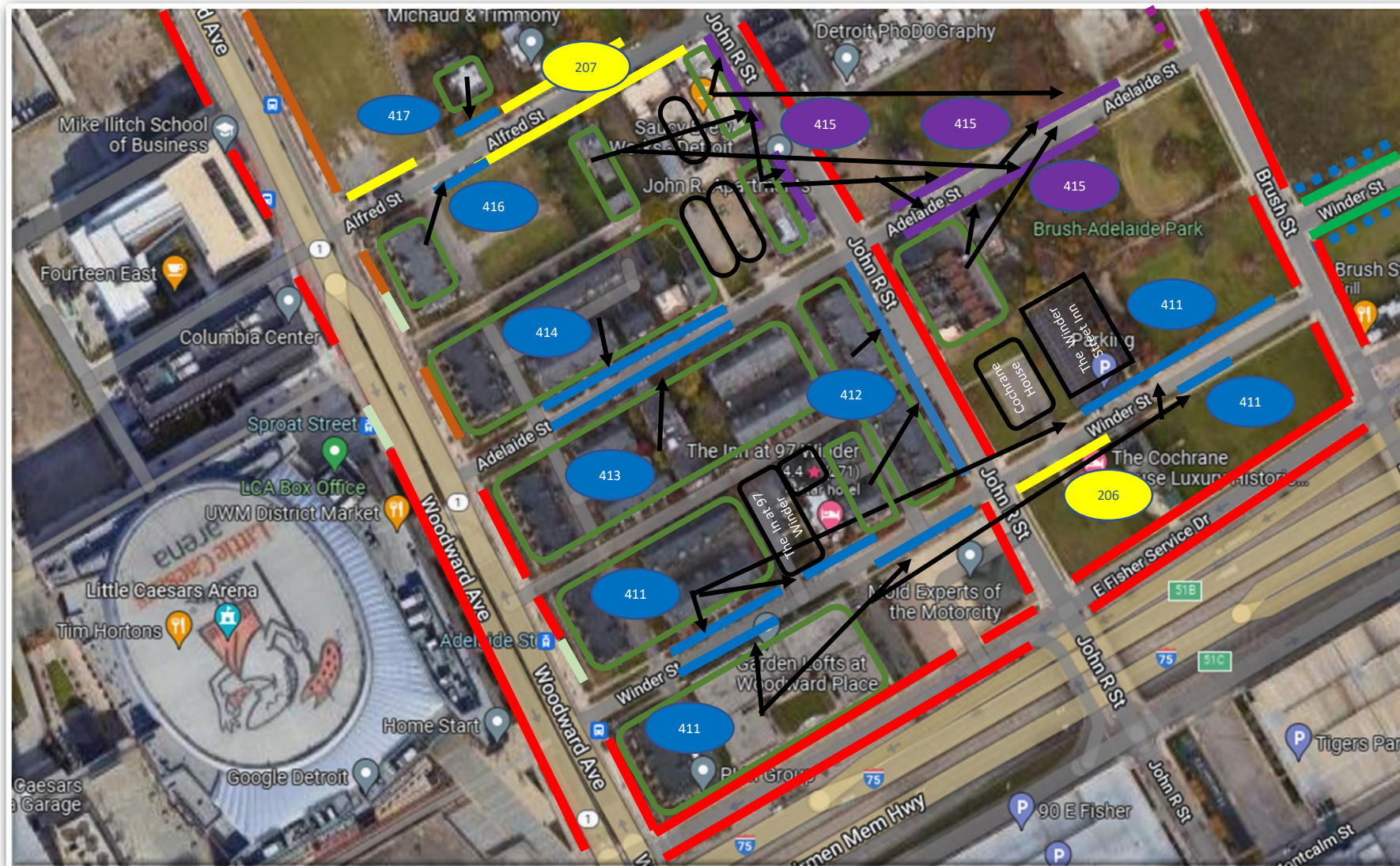
- Residential Parking
- Meter Parking
- No Parking
- Non- Meter Parking
- Private Lots
- Existing Meters
- Public Transit Stop
- Future RPP Parking
- Residential Meter Parking
- Residential Groups
- Municipal Parking

Residential Parking –Winder (Southern Brush Park) Zones 415



- Residential Parking
- Meter Parking
- No Parking
- Non- Meter Parking
- Private Lots
- Existing Meters
- Public Transit Stop
- Future RPP Parking
- Residential Meter Parking
- Residential Groups
- Municipal Parking

Residential Parking –Winder/Alfred/Adelaide/John R (Southern Brush Park)



- Residential Parking —
- Meter Parking —
- No Parking —
- Non- Meter Parking —
- Private Lots Private Lots
- Existing Meters —
- Public Transit Stop —
- Future RPP Parking - - -
- Residential Meter Parking —
- Residential Groups
- Municipal Parking —

Sign Only - Time Period Residential Parking Zone

Zone 411, 412,
413, 414
Signs

- Two vehicles per permit will be allowed to be registered
- 30 annual visitor passes
- Potentially up to 3 caregiver passes
- Car Rental passes based on visitor pass availability



Residential permit holders park 24hrs every day

Non-Residential permit holders
can park between 8am to 2pm



Metered - Time Period Residential Parking Zone

Zone 415 Meters w/ Signs

- Two vehicles per permit will be allowed to be registered
- 30 annual visitor passes
- Potentially up to 3 caregiver passes
- Car Rental passes based on visitor pass availability



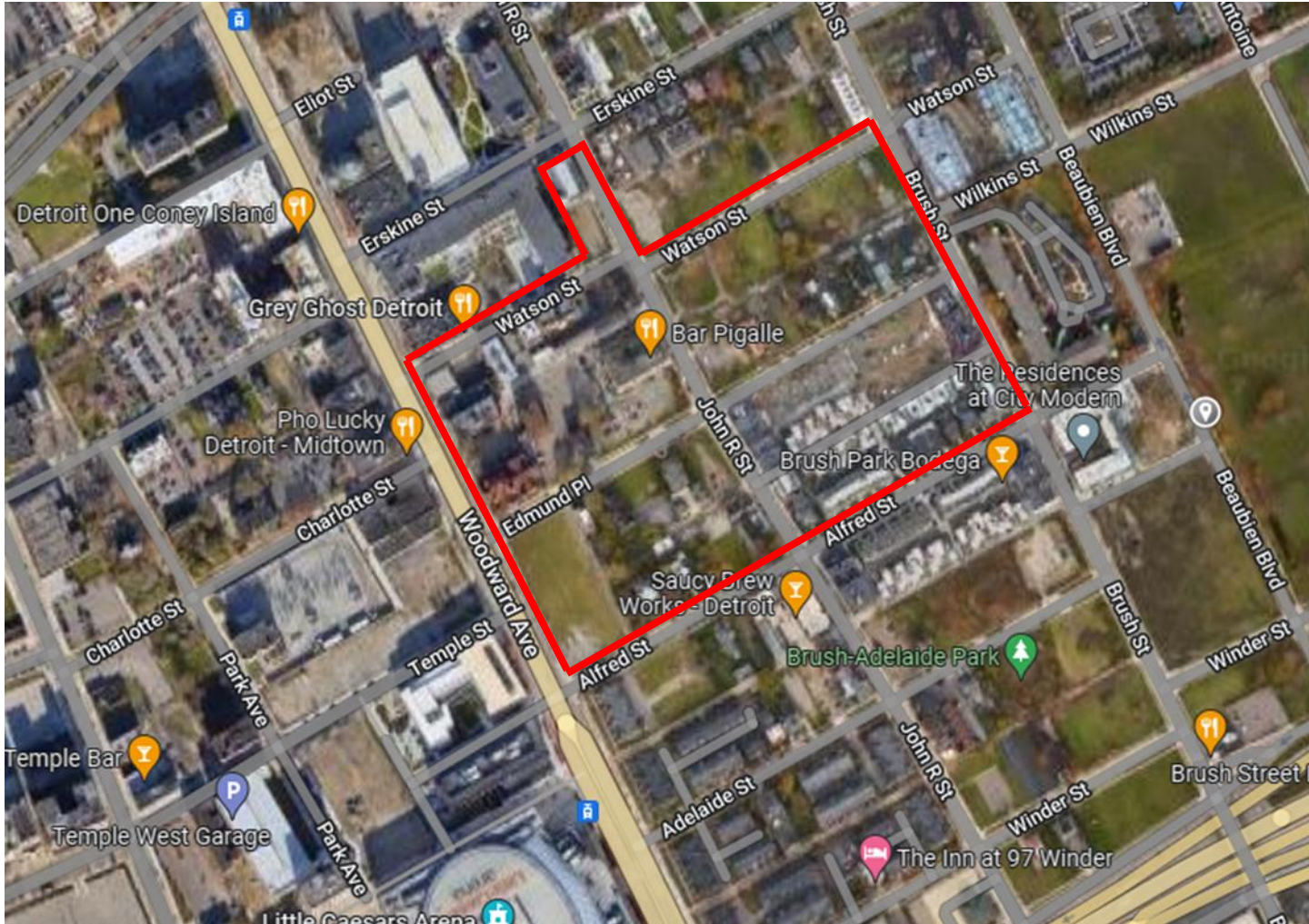
Residential permit holders park 24hrs every day



Non-Residential permit holders can park between 8am to 4pm



Central Brush Park Residential Parking Zone Area



- Boundaries
 - Starting point-intersection of Woodward & Alfred
 - Woodward to Watson
 - Watson to John R
 - John R to Erskine
 - John R @ Erskine to Watson
 - Watson to Brush
 - Brush to Alfred

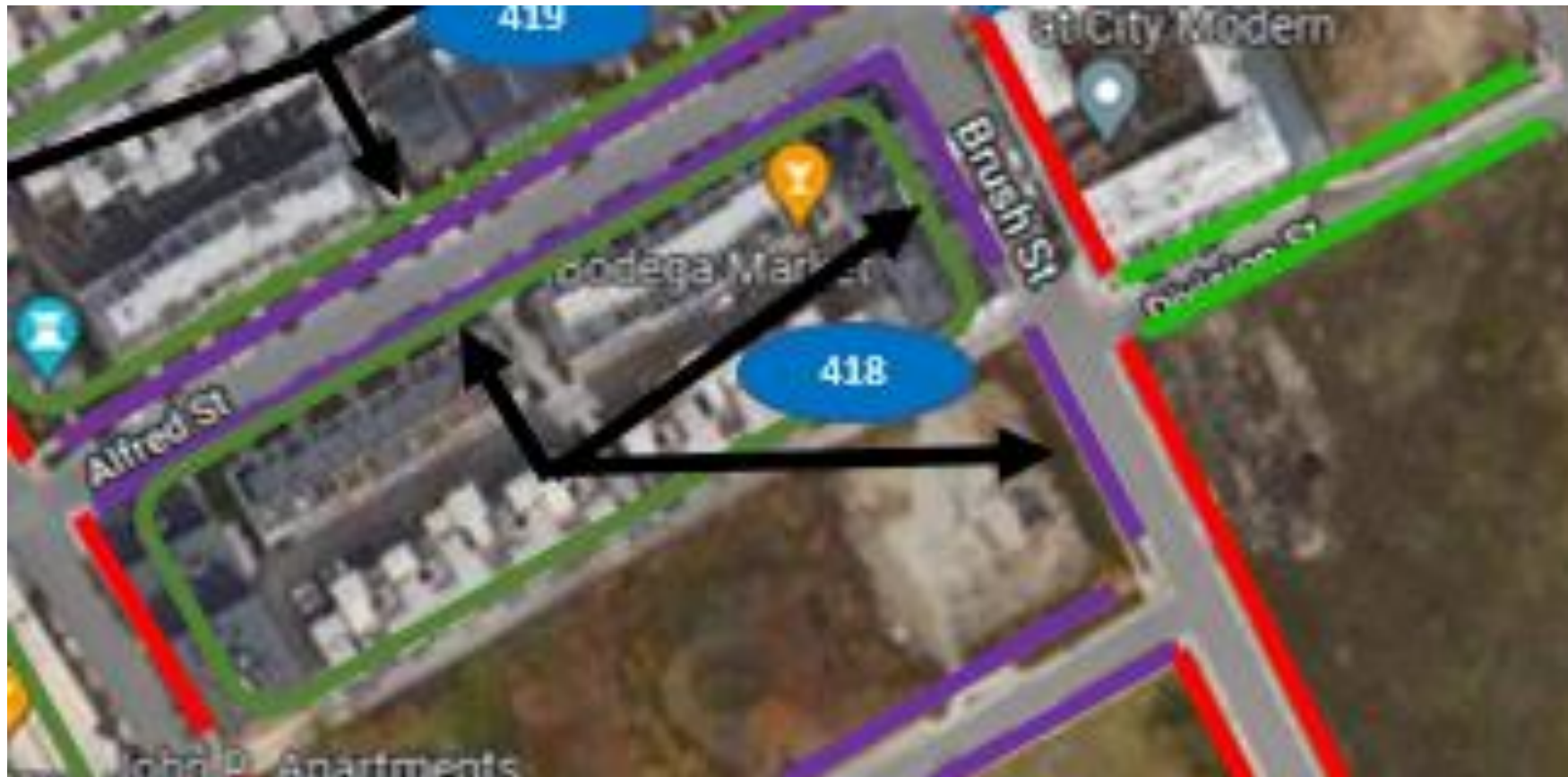


Residential Parking – Zone 416 -417, 207 Alfred and Brush



- Residential Parking ————
- Meter Parking ————
- No Parking ————
- Non- Meter Parking ————
- Private Lots Private Lots
- Existing Meters ————
- Future RPP Parking - - - -
- Residential Meter Parking ————
- Residential Groups
- Future Non-Meter Parking - - - -
- Municipal Parking ————

Residential Parking Plan – Zone 418 Alfred and Brush



- Residential Parking ————
- Meter Parking ————
- No Parking ————
- Non- Meter Parking ————
- Private Lots Private Lots
- Existing Meters ————
- Future RPP Parking - - - -
- Residential Meter Parking ————
- Residential Groups
- Future Non-Meter Parking - - - -
- Municipal Parking ————

Residential Parking – Zone 419 Alfred/ John R/Brush



- Residential Parking ————
- Meter Parking ————
- No Parking ————
- Non- Meter Parking ————
- Private Lots Private Lots
- Existing Meters ————
- Future RPP Parking - - - -
- Residential Meter Parking ————
- Residential Groups
- Future Non-Meter Parking - - - -
- Municipal Parking ————

Residential Parking – Zone 420 Edmund and Brush



- Residential Parking ————
- Meter Parking ————
- No Parking ————
- Non- Meter Parking ————
- Private Lots Private Lots
- Existing Meters ————
- Future RPP Parking - - - -
- Residential Meter Parking ————
- Residential Groups
- Future Non-Meter Parking - - - -
- Municipal Parking ————

Residential Parking – Zone 421 Watson



- Residential Parking ————
- Meter Parking ————
- No Parking ————
- Non- Meter Parking ————
- Private Lots Private Lots
- Existing Meters ————
- Future RPP Parking ————
- Residential Meter Parking ————
- Residential Groups
- Future Non-Meter Parking ————
- Municipal Parking ————

Residential Parking – Zones 422 – 423 John R



- | | |
|---------------------------|---|
| Residential Parking |  |
| Meter Parking |  |
| No Parking |  |
| Non- Meter Parking |  |
| Private Lots |  |
| Existing Meters |  |
| Future RPP Parking |  |
| Residential Meter Parking |  |
| Residential Groups |  |
| Future Non-Meter Parking |  |
| Municipal Parking |  |

Residential Parking Plan – Alfred/Edmund/Watson Streets/John R (Central Brush Park) Zones 416 - 423



- Residential Parking
- Meter Parking
- No Parking
- Non- Meter Parking
- Private Lots
- Future RPP Parking
- Residential Meter Parking
- Residential Groups
- Future Non-Meter Parking
- Existing Meter Parking

Time Period Metered Residential Parking Zone

Residential permit holders park 24hrs every day without paying meters

Signs for Zones
415
(Adelaide
& John R)
Southern Brush
Park Zone

- Two vehicles per permit will be allowed to be registered
- 30 annual visitor passes
- Potentially up to 3 caregiver passes
- Car Rental passes based on visitor pass availability



Non-Residential
permit holders
can park
between
9am to 4pm
but must pay
the meters



Time Period Sign Only Residential Parking Zone

Signs for Zones
416 (Alfred)
417 (Alfred)

- Zone 416 Two vehicles per permit will be allowed to be registered
- Zone 417 Two vehicles per permit will be allowed to be registered
- 30 annual visitor passes
- Potentially up to 3 caregiver passes
- Car Rental passes based on visitor pass availability



Residential permit holders park
24hrs every day

Non-Residential permit holders
can park between 9am to 4pm



Time Period Metered Residential Parking Zone

Signs for Zones
418, 419, 420, 421
(Alfred, Edmund,
Watson, Brush)

Residential permit holders park 24hrs every day without paying meters

- Two vehicles per permit will be allowed to be registered
- 30 annual visitor passes
- Potentially up to 3 caregiver passes
- Car Rental passes based on visitor pass availability



Non-Residential
permit holders
can park
between 7am
to 6pm but
must pay the
meters



Time Period Metered Residential Parking Zone

Residential permit holders park 24hrs every day without paying meters

Signs for Zones
422, 423

- Two vehicles per permit will be allowed to be registered
- 30 annual visitor passes
- Potentially up to 3 caregiver passes
- Car Rental passes based on visitor pass availability



Non-Residential
permit holders
can always park
in the zone but
must pay the
meters or
parking app

